

Product comparison

	SolarLog ⁵⁰⁰	SolarLog ¹⁰⁰⁰
Inverter communication / inverters		
Max. number inverters	10	100
Max. number inverters	1 x RS485 / RS422	1 x RS485, 1 x RS485 / RS422
Inverter-mixed mode	-	•
Maximum unit size	50 kWp	1 MWp
Maximum cable length	max. 1000m ¹⁾	max. 1000m ¹⁾
Bluetooth ²⁾	optional, internal antenna	optional, internal antenna
System monitoring		
String monitoring (dependant on inverter-type)	•	•
Inverter breakdown	•	•
Performance monitoring per inverter	•	•
Status / error monitoring	•	•
Sensor connection (Irradiation / 2 x Temp. / Wind)	-	•
Connection of digital electric meters	•	•
Email and SMS alert	•	•
Local alert (floating contact)	-	•
Income forecast	•	•
Degradations calculation	•	•
Visualization		
Integrated web server	•	•
Graph. visualization – local PC	•	•
Graph. visualization – USB stick	-	•
Graph. visualization – Internet	•	•
LED status indicator	•	•
Display on device	2-line Dot matrix display	Full-graphic display
Operation on device	Keypad entry	via touchscreen
Large display RS485 / S ₀ -Impuls	•/•	•/•
Interfaces		
Ethernet – Network	•	•
USB stick	-	•
Analog modem / GPRS (GSM) / DSL	-	•
Floating contact (relay)	-	•
Alarm contact (theft)	-	•
General data		
Power supply / Voltage	220V / 12V	
Electricity consumption	3W	3W
Ambient temperature	-10°C bis +50°C	
Case	Plastic	
Dimensions (B x T x H) in cm	22,5 x 4 x 28,5	
Installation	Wall mounted	
Protection	IP 20 (only for indoor use)	
Connection to SolarLog™ portal	•	•
Multiple languages (DE, EN, ES, FR, IT, NL)	•	•
Memory, Micro-SD, 2 GB, endless data-recording	•	•
Warranty	5 years	

¹⁾ Depending on the inverter and the cable length (Figures may vary depending on the type of device)

²⁾ Other important information on Bluetooth and compatibility can be found on our website

SolarLog¹⁰⁰⁰ delivery includes

- SolarLog¹⁰⁰⁰ basic unit
Art. No. 211001
Art. No. 211002 with Bluetooth
- 12 Volt Power Supply
- Connector for all connectors
(2 x 6 pol., 1 x 4 pol., 2 x 3 pol.)
- Manual

Made in Germany.

No responsibility is taken for the correctness of this information.
Subject to change without notice.

SolarLog¹⁰⁰⁰ accessories

- Cable set ready to go for all supported inverters
- Modem package, Art. No. 220045/220046
- Mobile wireless package, Art. No. 220047
- Sensor Box, Art. No. 220060
- 3-phase current meter, Art. No. 220035/220036

SMA inverter accessory

- Special PiggyBack RS485, Art. No. 220020 (except TL-20)
- Data-Modul SMA RS485, Art. Nr. 220053



Solar-Log™

by Solare Datensysteme GmbH

MAXIMIZED SUNPOWER

SolarLog¹⁰⁰⁰

The SolarLog¹⁰⁰⁰ is a device for monitoring photovoltaic systems. It supports up to 100 inverters¹⁾.

It can be operated either directly with the touch screen display or via a web-browser on the net-work. A software installation is not required.

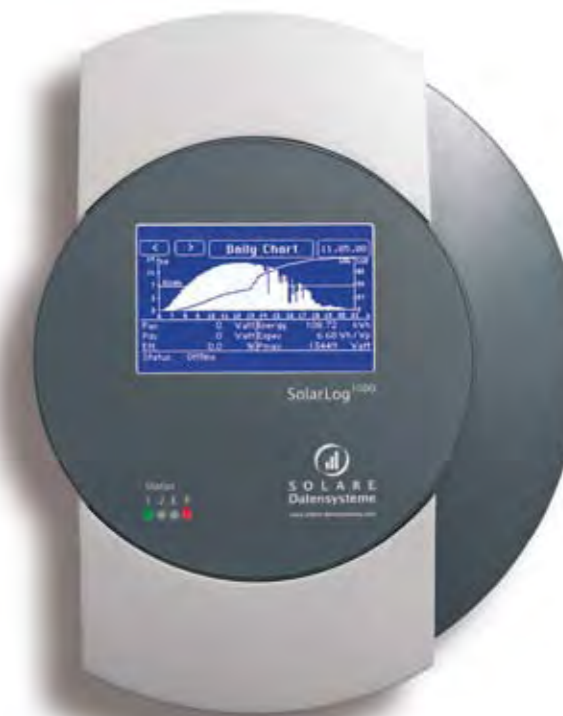
The SolarLog¹⁰⁰⁰ works with all major inverters on the market. It connects to the inverter via the RS485 interface. The data of each inverter can be read, stored and analyzed.

Top-Features:

- **Display:** 2-line text display with membrane keyboard, 4 status LEDs, S₀ output for large displays to be attached
- **Operation / configuration:** either via a keypad / text display or PC
- **Software:** web interface – no software installation required
- **Compatibility:** manufacturer independent – suitable for all current inverters
- **Capacity:** max. of 100 inverters can be connected
- **Connections:** 2x RS485 interfaces for connecting inverters in mixed mode and any combination thereof, Fronius/Sunville inverters can be connected without additional interface converters
- **Network:** automatic network identification via DHCP
- **Offline mode:** USB stick port for easy data transfer and offline
- **Viewing sensors:** Connecting a sensor for collecting environmental data (radiation, outside temperature & wind sensor modules) is possible.
- **Alarm functions:** protection against theft via contact loop, external alarm through floating output contact possible
- **Consumption measurement:** S₀ input for optional measurement and calculation of one's own electricity consumption
- **Bluetooth²⁾:** optional Bluetooth module for wireless connection to the new SMA inverter generation

Easy Installation

- **Inverter connection:** inverter direct connection via RS485 interface, combined RS485 / RS422 interface or optional Bluetooth module (simultaneous operation of Bluetooth and RS485 possible)
- **Network connection:** Ethernet 10/100 MBit standard interface for connecting to a PC, wireless, internet routers or power adapter line
- **Modem connection:** mobile phone and telephone modem via RS232
- **Configuration:** either via built-in touch screen or via a web browser on a PC
- **Software:** no software installation necessary
- **Operating Systems:** compatible with Windows, Linux or Mac.



Art. Nr. 250013 EN | SDS 09.2009



Extensive system monitoring

- **Failure monitoring:** monitoring of each individual inverter
- **Performance comparison:** comparison of individual strings and inverters
- **Inverter status:** evaluation of status and error messages of all inverters
- **Evaluation:** daily earnings report
- **Messaging service:** either per email or SMS or directly on unit display directly
- **Parameters for each inverter:** current, voltage, power, DC and AC¹⁾

Graphical visualization

- **Display:** graphical and tabular analysis, daily, monthly, annual and total view (all years), target values for annual yield, yield and input line voltage in the day view possible
- **Output:** integrated 4.5" display, PC, PDA, WLAN, Internet
- **EU power consumption:** graphical representation of one's own power consumption inside the EU, production and own consumption with energy balance

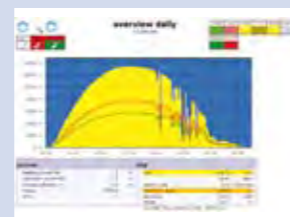
Graphical display SolarLog¹⁰⁰⁰



Display Internet / PC



Daily overview: reference value of receiver sensor (green) with a yield curve (yellow) and module temperature (red)



Daily overview: day view of all inverters including yield curve of inverter 1 + inverter 2

Diagnosis

- **Logging:** inverter status and errors
- **Amount of data:** 200 events per inverter
- **Frequency:** 15 seconds
- **Error / fault analysis:** fluctuating conditions or disorders of the electricity network provider identified
- **Degradation module:** automatic calculation of the individual years

Internet

- **Connection:** standard Ethernet 10/100 MBit interface, RS232 interface for analog modem or GSM / GPRS radio modem
- **Active messaging:** automatic sending of the daily yield via email or SMS
- **Data integration:** online values transferable to any homepage at adjustable intervals (min. 10 min)
- **Internet-portal for dealers:** comprehensive web-portal for management of customer installations, remote configuration and access control

Alerts / Alarms

- **Type:** user-configurable warnings, faults, theft protection, messaging: email or SMS
- **External signal:** relay switch on
- **Internal display:** status LED on

USB interface

- **Interface:** USB stick
- **Export:** Offline analysis of all data possible
- **Import:** firmware update for facilities without Internet and without a PC

Large display connector

- **RS-485-interface:** for parallel connection of displays from Schneider Engineering, Rico or HVG
- **S₀ pulse output:** for connection of displays from any manufacturer, pulse-adjustable
- **Compatible** with the multimedia large display „solarfox“ from www.solar-fox.de

Supported inverters	
SMA	Mitsubishi
Sunways	Solutronic
Diehl AKO	KACO
Refu	Fronius
Sunville/Phoenixtec	Danfoss
Sputnik/SolarMax	Mastervolt
Kostal	Schüco
Power-One	
- Others in the pipeline	

Cable concealment

It's possible to conceal all cables inside the unit casing so that no cables are visible at all. This of course is a great advantage especially in living areas.

Data security

- **Export:** save to hard-disk, save automatically to homepage
- **Data format:** CSV (simple text file, separated by semicolons)
- **Import of older data yields:** either importing a CSV file as "existing performance data" or manually adding as daily earnings
- **Updates:** free at www.solar-log.com, updated automatically or manually
- **Amount of memory:** 20 years of continuous data recording at 5-minute intervals
- **Storage hardware:** condenser (GoldCap) with 50 days safety buffer

