

## Product comparison

	SolarLog <sup>500</sup>	SolarLog <sup>1000</sup>
<b>Inverter communication / inverters</b>		
Max. number inverters	10	100
Max. number inverters	1 x RS485 / RS422	1 x RS485, 1 x RS485 / RS422
Inverter-mixed mode	-	•
Maximum unit size	50 kWp	1 MWp
Maximum cable length	max. 1000m <sup>1)</sup>	max. 1000m <sup>1)</sup>
Bluetooth <sup>2)</sup>	optional, internal antenna	optional, internal antenna
<b>System monitoring</b>		
String monitoring (dependant on inverter-type)	•	•
Inverter breakdown	•	•
Performance monitoring per inverter	•	•
Status / error monitoring	•	•
Sensor connection (Irradiation / 2 x Temp. / Wind)	-	•
Connection of digital electric meters	•	•
Email and SMS alert	•	•
Local alert (floating contact)	-	•
Income forecast	•	•
Degradations calculation	•	•
<b>Visualization</b>		
Integrated web server	•	•
Graph. visualization – local PC	•	•
Graph. visualization – USB stick	-	•
Graph. visualization – Internet	•	•
LED status indicator	•	•
Display on device	2-line Dot matrix display	Full-graphic display
Operation on device	Keypad entry	via touchscreen
Large display RS485 / S <sub>0</sub> -Impuls	•/•	•/•
<b>Interfaces</b>		
Ethernet – Network	•	•
USB stick	-	•
Analog modem / GPRS (GSM) / DSL	-	•
Floating contact (relay)	-	•
Alarm contact (theft)	-	•
<b>General data</b>		
Power supply / Voltage	220V / 12V	
Electricity consumption	3W	3W
Ambient temperature	-10°C bis +50°C	
Case	Plastic	
Dimensions (B x T x H) in cm	22,5 x 4 x 28,5	
Installation	Wall mounted	
Protection	IP 20 (only for indoor use)	
Connection to SolarLog™ portal	•	•
Multiple languages (DE, EN, ES, FR, IT, NL)	•	•
Memory, Micro-SD, 2 GB, endless data-recording	•	•
Warranty	5 years	

<sup>1)</sup> Depending on the inverter and the cable length (Figures may vary depending on the type of device)

<sup>2)</sup> Other important information on Bluetooth and compatibility can be found on our website

### SolarLog<sup>500</sup> delivery includes

- SolarLog<sup>500</sup> basic unit,  
Art. Nr. 210501  
Art. Nr. 210502 with Bluetooth
- 12 Volt Power Supply
- Connector for all connectors (2 x 6 pol.)
- manual

### Made in Germany.

No responsibility is taken for the correctness of this information.  
Subject to change without notice.

### SolarLog<sup>500</sup> accessories

- Cable set ready to go for all supported inverters
- Powerline package, Art. No. 220015
- RS485 wireless package, Art. No. 220058
- 3-phase current meter, Art. No. 220035 / 220036

### SMA inverter accessory

- Special PiggyBack RS485, Art. No. 220020 (except TL-20)
- Data-Modul SMA RS485, Art. No. 220053



# Solar-Log™

by Solare Datensysteme GmbH

## MAXIMIZED SUNPOWER

### SolarLog<sup>500</sup>

The SolarLog<sup>500</sup> is a device for monitoring photovoltaic systems. It supports up to 10 inverters<sup>1)</sup>.

It can be operated either directly over the 2-line text display with keypad or via a web-browser on the network. A software installation is not required.

The SolarLog<sup>500</sup> works with all major inverters on the market. It connects to the inverter via the RS485 interface. The data of each inverter can be read, stored and analyzed.



### Top-Features

- **Display:** 2-line text display with membrane keyboard, 4 status LEDs, S<sub>0</sub> output for large displays to be attached
- **Operation / configuration:** either via a keypad / text display or PC
- **Software:** web interface – no software installation required
- **Compatibility:** manufacturer independent – suitable for all current inverters
- **Capacity:** max. of 10 inverters can be connected
- **Connections:** RS485 interface for connecting inverters, Fronius / Sunville inverters can be connected without additional interface converters
- **Network:** automatic network identification via DHCP
- **Consumption measurement:** S<sub>0</sub> input for optional measurement and calculation of one's own electricity consumption
- **Bluetooth<sup>2)</sup>:** optional Bluetooth module for wireless connection to the new SMA inverter generation

### Easy Installation

- **Inverter connection:** inverter direct connection via RS485 interface, combined RS485 / RS422 interface or optional Bluetooth module (simultaneous operation of Bluetooth and RS485 possible)
- **Network connection:** Ethernet 10 / 100 MBit standard interface for connecting to a PC, wireless, internet routers or power adapter line
- **Configuration:** either via 2-line text display with keypad or via web browser on a PC
- **Software:** no software installation needed
- **Operating Systems:** compatible with Windows, Linux or Mac

Art. Nr. 250012 EN | SDS 09.2009

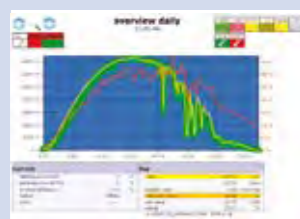
## Extensive system monitoring

- **Failure monitoring:** monitoring of each individual inverter
- **Performance comparison:** comparison of individual strings and Inverters
- **Inverter status:** evaluation of status and error messages of all inverters
- **Evaluation:** daily earnings report
- **Messaging service:** either per email or SMS
- **Parameters for each inverter:** current, voltage, power, DC and AC<sup>1)</sup>

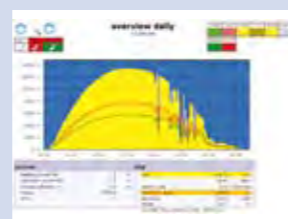
## Graphical visualization

- **Display:** graphical and tabular analysis, daily, monthly, annual and total view (all years), target values for annual yield, yield and input line voltage in the day view possible
- **Output:** PC, PDA via WLAN, Internet
- **EU power consumption:** graphical representation of one's own power consumption inside the EU, production and own consumption with energy balance

## ➔ Display Internet/PC



**Daily overview:**  
reference value of receiver sensor (green) with a yield curve (yellow) and module temperature (red)



**Daily overview:**  
day view of all inverters including yield curve of inverter 1 + inverter 2

## Diagnosis

- **Logging:** inverter status and errors
- **Amount of data:** 200 events per inverter
- **Frequency:** 15 seconds
- **Error/Fault Analysis:** fluctuating conditions or disorders of the electricity network provider identified
- **Degradation module:** automatic calculation of the individual years

## Internet

- **Connection:** standard Ethernet 10/100 MBit interface
- **Active messaging:** automatic dispatch of the daily yield via email or SMS
- **Data intergration:** online values transferable to any homepage at adjustable intervals (min. 10 min)
- **Internet-portal for dealers:** comprehensive web-portal for management of customer installations, remote access control

## Alerts / Alarms

- **Type:** user-configurable alerts and faults
- **Messaging:** email or SMS
- **Internal Display:** status LED on

## Large display connector

- **RS-485-interface:** for parallel connection of displays from Schneider Engineering, Rico or HVG
- **S<sub>0</sub> pulse output:** for connection of displays from any manufacturer, pulse-adjustable
- **Compatible** with the multimedia large display „solarfox“ from www.solar-fox.de

## Data security

- **Export:** save to hard-disk, save automatically to homepage
- **Data format:** CSV (simple text file, separated by semicolons)
- **Import of older data yields:** either importing a CSV file as „existing performance data“ or manually adding as daily earnings
- **Updates:** free at www.solar-log.com, updated automatically or manually
- **Amount of memory:** 20 years of endless data recording at 5-minute intervals
- **Storage hardware:** condenser (GoldCap) with 50 days safety buffer

Supported inverters	
SMA	Mitsubishi
Sunways	Solutronic
Diehl AKO	KACO
Refu	Fronius
Sunville/Phoenixtec	Danfoss
Sputnik/SolarMax	Mastervolt
Kostal	Schüco
Power-One	
- Others in the pipeline	

## Cable concealment

It's possible to conceal all cables inside the unit casing so that no cables are visible at all. This of course is a great advantage especially in living areas.

